



BCF A&E Performance NC London JHOSC

24 March 2014

A&E Performance: All type by area

Last 4 weeks sitrep

	23/02/14	02/03/14	09/03/14	16/03/14	4 weeks average	Quarter 4
Chelsea & Westminster	98.18%	98.33%	98.13%	97.99%	98.16%	98.18%
Ealing	98.18%	98.36%	98.28%	98.24%	98.27%	97.43%
Hillingdon	95.60%	96.21%	97.27%	96.48%	96.41%	96.76%
Imperial	95.04%	95.79%	96.16%	95.71%	95.68%	95.96%
North West London Hospitals	88.52%	90.21%	94.51%	93.20%	91.65%	93.06%
West Middlesex	97.33%	95.92%	97.06%	98.16%	97.12%	96.98%
North West London Trusts	95.71%	96.14%	97.20%	96.87%	96.49%	96.74%
Barnet & Chase Farm	89.49%	84.08%	85.73%	96.61%	89.01%	90.64%
Moorfields	100.00%	99.77%	99.94%	99.89%	99.90%	99.91%
North Middlesex	97.38%	91.96%	92.45%	97.79%	94.90%	95.04%
Royal Free	96.01%	95.42%	96.96%	97.17%	96.40%	96.16%
UCLH	96.34%	96.76%	96.91%	97.21%	96.81%	96.16%
Whittington	95.60%	94.18%	95.70%	98.05%	95.90%	95.86%
Barking, Havering & Redbridge	87.20%	90.97%	88.31%	88.77%	88.81%	86.32%
Bart's Health	97.66%	95.54%	95.56%	97.23%	96.50%	95.06%
Homerton	97.43%	97.28%	96.41%	96.35%	96.86%	96.39%
North and East London Trusts	95.75%	94.67%	94.57%	96.60%	95.40%	94.74%
Guys & St Thomas'	98.31%	96.69%	96.59%	95.51%	96.74%	96.79%
King's College	89.30%	85.94%	86.74%	89.01%	87.74%	87.55%
Lewisham & Greenwich	90.66%	90.56%	89.91%	92.02%	90.80%	90.22%
Epsom & St. Helier	97.00%	97.31%	97.67%	97.60%	97.40%	96.37%
Kingston	96.19%	96.88%	94.61%	95.82%	95.86%	95.35%
Croydon Healthcare	95.50%	95.36%	96.24%	95.02%	95.53%	95.34%
St. George's	90.20%	88.20%	94.26%	91.54%	91.08%	93.25%
South London Trusts	94.15%	93.10%	93.68%	94.09%	93.75%	93.68%
Total London Performance	95.28%	94.64%	95.07%	95.89%	95.23%	95.02%

Top 5 QTD Trusts

Moorfields	99.91%
Chelsea & Westminster	98.18%
Ealing	97.43%
West Middlesex	96.98%
Guys & St Thomas'	96.79%

Bottom 5 QTD Trusts

North West London Hospitals	93.06%
Barnet & Chase Farm	90.64%
Lewisham & Greenwich	90.22%
King's College	87.55%
Barking, Havering & Redbridge	86.32%

Ambulance Waiting Times

9th Dec to Present

Weekly Patient Ambulance Arrival to Handover Performance


Week Commencing (Multiple s)

Hospital Site	KPIs							
	KPI 1 : % within 15 mins	KPI 1 - Target	KPI 2 : % within 30 mins	KPI 2 - Target	30 Min Handover Waits	60 Min Handover Waits	KPI 4 : % Data Completeness	KPI 4 - Target
Homerton University Hospital	84.0%	100%	99.4%	100%	27	3	91.7%	90%
Barnet Hospital	64.4%	100%	90.9%	100%	518	107	94.2%	90%
Royal Free Hospital	45.7%	100%	94.6%	100%	290	4	91.9%	90%
Whipps Cross University Hospital	45.2%	100%	94.6%	100%	350	4	86.5%	90%
University College Hospital	42.5%	100%	93.3%	100%	456	1	90.3%	90%
Whittington Hospital	38.5%	100%	93.0%	100%	358	9	90.7%	90%
North Middlesex University Hospital	27.6%	100%	80.8%	100%	1871	36	90.2%	90%
Total	51.5%	100%	94.1%	100%	10205	605	89.9%	90%

Ambulance Waiting Times

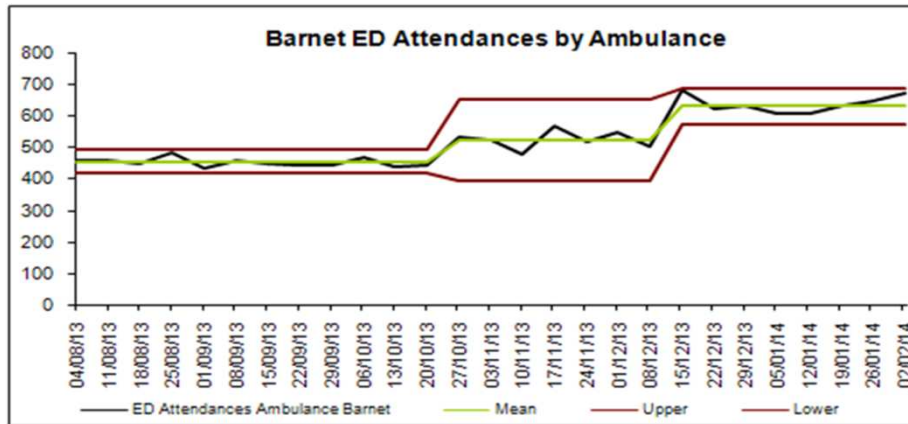
W/C 17th March 2014

Weekly Patient Arrival to Handover Ranked Performance (KPI1)

Week Commencing 2014-03-1 

Hospital Site	KPIs				30 Min Handover Waits	60 Min Handover Waits	KPI 4 : % Data Complete	KPI 4 - Target
	KPI 1 : % within 15 mins	KPI 1 - Target	KPI 2 : % within 30 mins	KPI 2 - Target				
Homerton University Hospital	80.5%	100%	99.7%	100%	1	0	90.4%	90%
Barnet Hospital	72.8%	100%	96.7%	100%	14	1	95.4%	90%
Northwick Park Hospital	64.6%	100%	98.2%	100%	12	0	94.1%	90%
West Middlesex University Hospital	62.7%	100%	96.7%	100%	14	0	92.1%	90%
Whipps Cross University Hospital	46.5%	100%	95.7%	100%	18	1	83.7%	90%
University College Hospital	44.9%	100%	91.6%	100%	42	0	91.3%	90%
Royal Free Hospital	38.2%	100%	94.7%	100%	21	0	92.1%	90%
Whittington Hospital	35.3%	100%	95.2%	100%	18	1	91.5%	90%
North Middlesex University Hospital	26.6%	100%	81.9%	100%	126	1	89.7%	90%
Total	51.9%	100%	94.8%	100%	670	9	89.8%	90%

Barnet ED Ambulance Attendances



Emergency Department Ambulance Arrivals

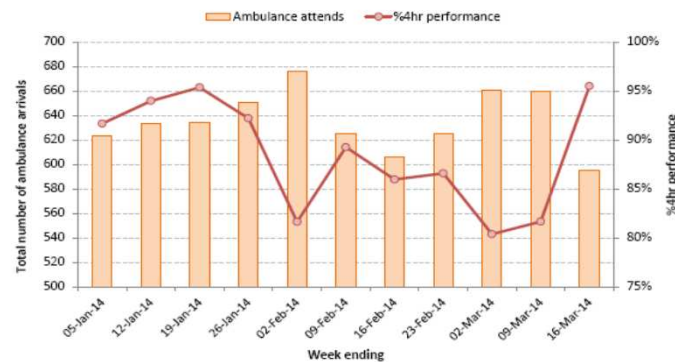
Daily Report: 20 March 2014

Fiscal Week: 61

Total Number of Ambulance Arrivals Barnet Hospital

Monthly Arrivals Barnet			
Month	Total	Ambulance	% Ambulance
Apr	7,328	2,060	28%
May	7,346	2,134	29%
Jun	7,029	2,020	29%
Jul	7,599	2,106	28%
Aug	6,748	2,022	30%
Sep	6,916	1,921	28%
Oct	7,247	2,085	29%
Nov	7,314	2,273	31%
Dec	8,816	2,655	30%
Jan	8,966	2,855	32%
Feb	8,230	2,513	31%
Mar	6,188	1,824	29%

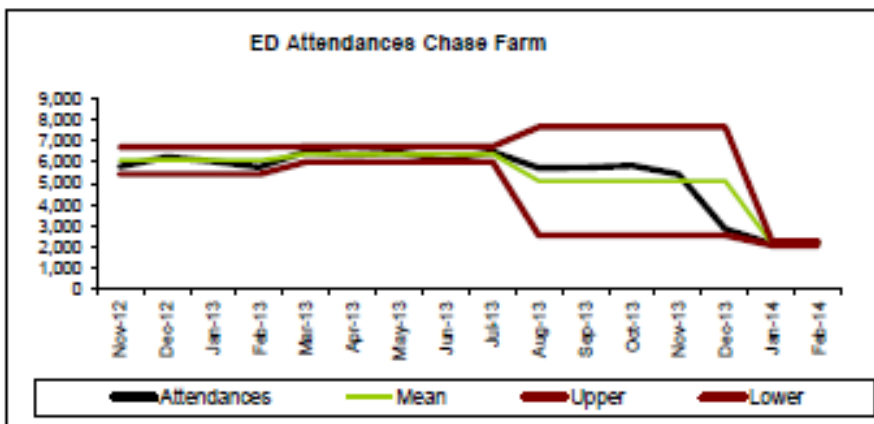
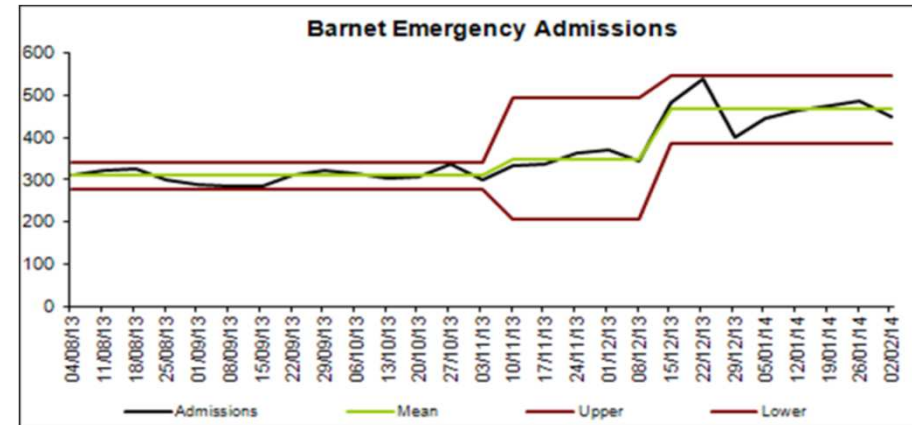
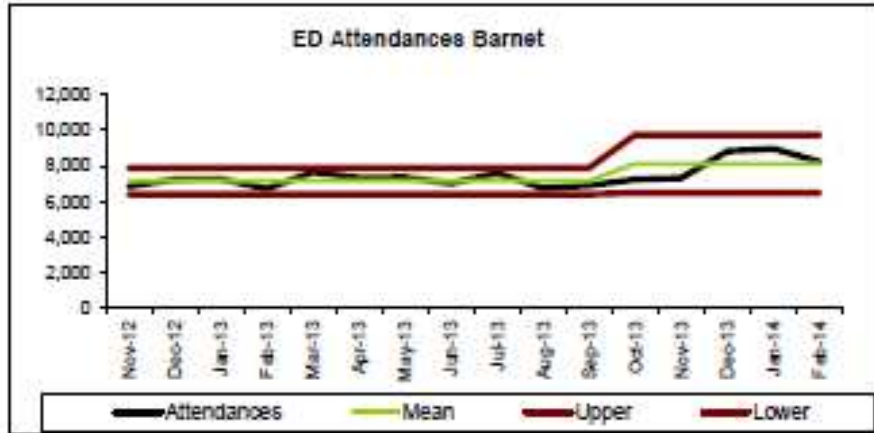
Ambulance arrivals vs 4hr performance



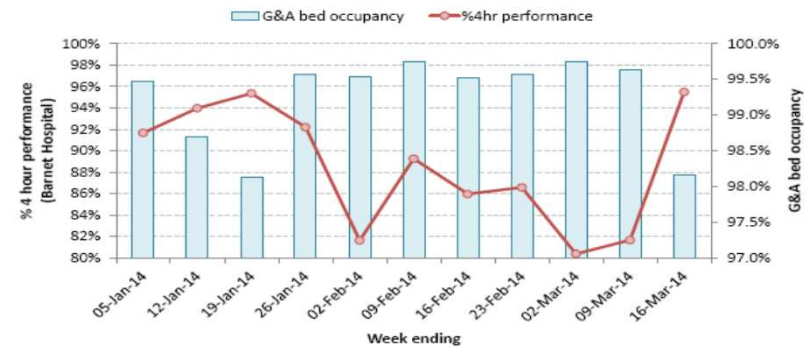
There is a clear inverse correlation between the two measures (correlation coefficient = -62%)

6.4% higher than modelled

Attendances and Admissions

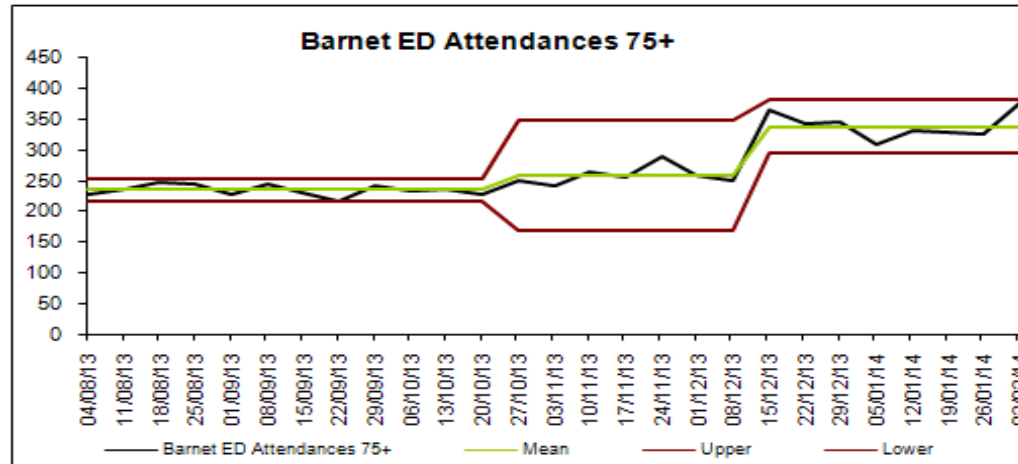


Bed occupancy vs 4hr performance



There is a clear inverse correlation between the two measures (correlation coefficient = -74%)

Barnet ED 75+ years Activity



Majority elderly patients attending from their own homes

Top 20 attending and admitting care homes known

Top 10 admitting reasons for elderly patients:

- Pneumonia
- COPD with infection
- Aspiration pneumonitis
- Urinary tract infection
- Falls
- Fractured hip
- Cellulitis
- Stroke
- Atrial fibrillation
- Renal failure

Improving performance

- Action plan jointly created with CCGs
- Continue to maintain quality care during times of pressure
- System review of post BEH “new normal”
- Continued work with consultants on improved discharge planning and weekend discharges
- Review 65+ yr old admissions with CCGs to implement further care closer to home schemes
- Increase supported discharges through TREAT and PACE
- Remodel bed base at BH